



NEW YORK, NY – January 8, 2021 – **Tagliatella Galleries (New York)** is excited announce its first exhibition of 2021 and second solo show dedicated entirely to the artwork of the contemporary artist **Invader**, known widely and appropriately by the pseudonym taken after Taito’s famous arcade game *Space Invaders*.

Traversing the globe for over 20 years, **Invader** has installed nearly 4,000 works inspired by the 8-bit friends of an entire generation. Whether it’s *Pac Man* evading his captors in Hong Kong, *Super Mario* leaping from a drainpipe in New York City, or a portrait of *The Pink Panther* prowling passersby on the streets of Paris; fans and collectors are filled with child-like amusement when they discover a new mosaic in the streets that is unmistakably **Invader**. And if they don’t know it’s an authentic **Invader**, well, there’s an app for that ([see: Flash Invaders](#)).

Remarkably, **Invader** continues to install his pieces in public spaces by scaling buildings, circumventing geographical challenges, and daring to defy earthly limitations in order to complete his extraterrestrial “Invasions”. Despite **Invader’s** fame deriving from works found in the wild, the artist has also amassed over two decades of fine art from the studio. As of late, the artist’s works have appeared in many museums, all major auction houses, and substantial private and public art collections.

Following Tagliatella’s first **Invader** exhibition, *GAME ON! The Art of Invader*, the gallery has amassed an even larger collection. In *1UP*, Tagliatella Galleries will display an unprecedented variety of **Invader** artworks secured from the secondary market, including iconic original works such as rare sculptural compilations and paintings, as well as limited editions from past exhibitions and prior Invasions. *1UP* will run congruently to the artist’s current museum exhibition *Invader: Prints on Paper*, on display at the International Centre of Graphic Arts (MGLC) in Ljubljana, Slovenia. **1UP opens Thursday, January 21st and will be on display through February 16th, 2021.**

While there is no opening reception, the exhibition is free and open to the public, **Monday – Saturday, 11-5pm at 229 10th Ave., New York, NY**. The gallery is enforcing all COVID-19 related rules as mandated by the Governor of the State of New York as well as complying with all CDC guidelines to ensure everyone’s safety. As part of this effort, Tagliatella Galleries welcomes you to experience our virtual viewing room created for this exhibition by visiting www.tagliatellagalleries.com.

For additional information, please email info@djfa.com or call (212) 367-0881.

NEW YORK

229 Tenth Avenue
New York, NY 10011

p 212.367.0881
f 212.367.0806

PALM BEACH

313 ½ Worth Avenue-Via Bice
Palm Beach, FL 33480

p 561.833.4700
f 561.832.5050

PARIS

7 rue Cail
75010 Paris

p +33.1.42.718.772

TORONTO

99 Yorkville Avenue
Toronto, ON M5R 1C1

p +1 416-864-3850

www.tagliatellagalleries.com
MODERN & CONTEMPORARY MASTERS

New York City



Invader on rooftop in NYC, 2009 | Artwork featured: Lost in Rubik Camo Space 1, 2007

While *Top 10* was not his first presence in America, the 2009 solo exhibition put Invader on the New York art world's map (no pun intended... the artist likes maps), in part by introducing unique forms that would become the artist's signature aesthetic. In *Top 10* Invader mimicked digital imagery by use of pixelization, either with mosaic tiles or the compilation of Rubik's Cubes, a unique aesthetic that would become one of the artist's primary mediums. The title of the show was a reference to music, as Invader also re-created his "Top 10" favorite album covers with his new Rubikcubism medium. Taglialatella Galleries has several works that were a part of this ground-breaking exhibition.



Invader (1969)

Lost in Rubik Camo Space 1, 2007

Mosaic tiles on wood panel

19 x 24 in. (48.3 x 61 cm)

Signed | Dated

Unique



Invader (1969)

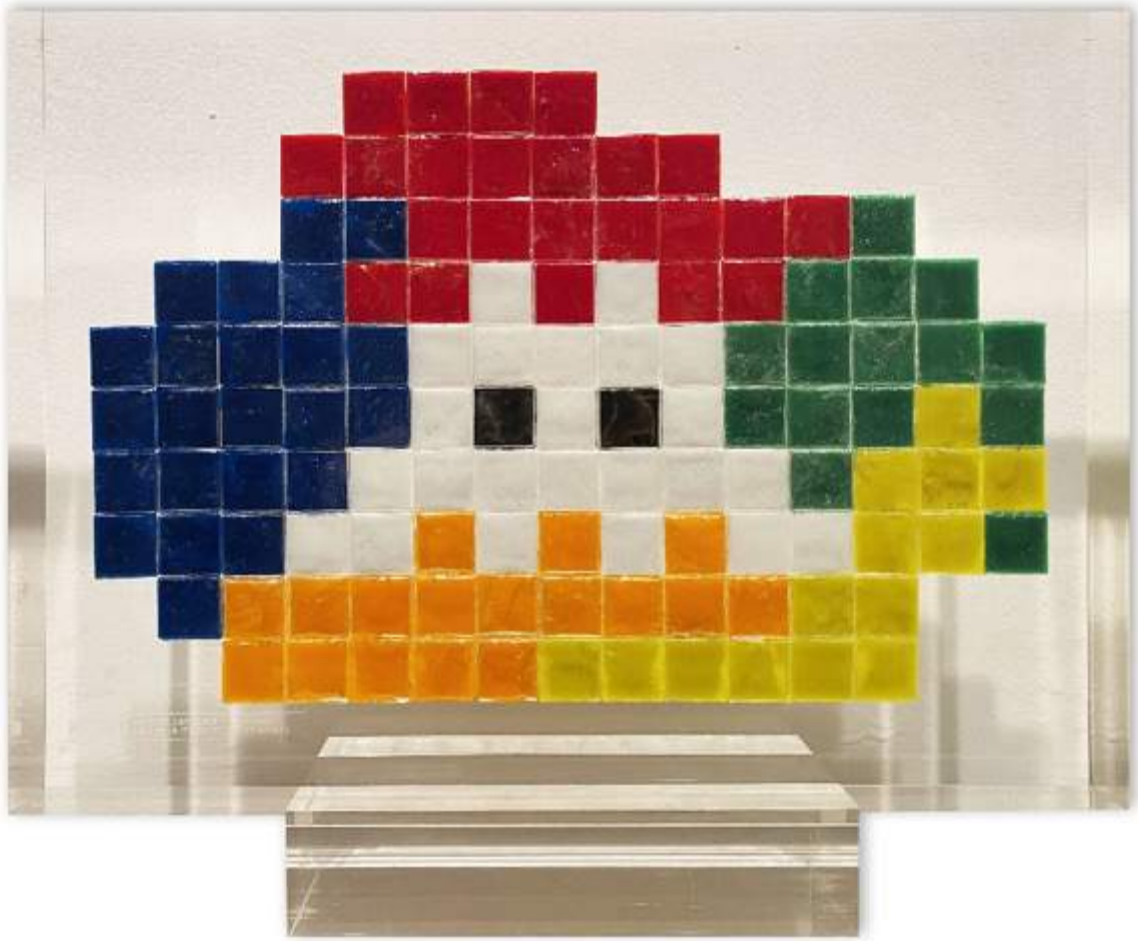
Small Apple Space (5), 2009

Mosaic tiles on board

11 3/4 x 11 in. (29.8 x 27.9 cm)

Signed

Unique



Invader (1969)

Alias (NY_109), 2007/2008

Ceramic tiles in resin

9 3/4 x 13 3/8 x 2 in. (25 x 34 x 5 cm)

Accompanied by signed "ID" Card COA issued in 2008

Inscribed signature in resin

Unique

Rubikcubism



Rubikcubism works by Invader | 1000, Galerie le Feuvre, La générale, Paris, 2011

Mentioned previously, Invader began creating works by stacking Rubik's cubes into compilations around 2004, manipulating the moveable tiles until the various colors and cubes compose an image. The visual effect is similar to that explored by pointillist painters and cubist artists in the past. Invader calls this medium "Rubikcubism" and suggests that visitors to his exhibitions and installations view the busier works from a distance, or by use of a camera or cell phone. This medium has become one of the artists most sought-after, selling at record numbers in auction houses around the world.



Invader (1969)

Rubik Cubism (First Edition), 2006

Screenprint on paper

27 1/2 x 27 1/2 in. (70 x 70 cm)

Edition of 75

Signed | Numbered



Invader (1969)

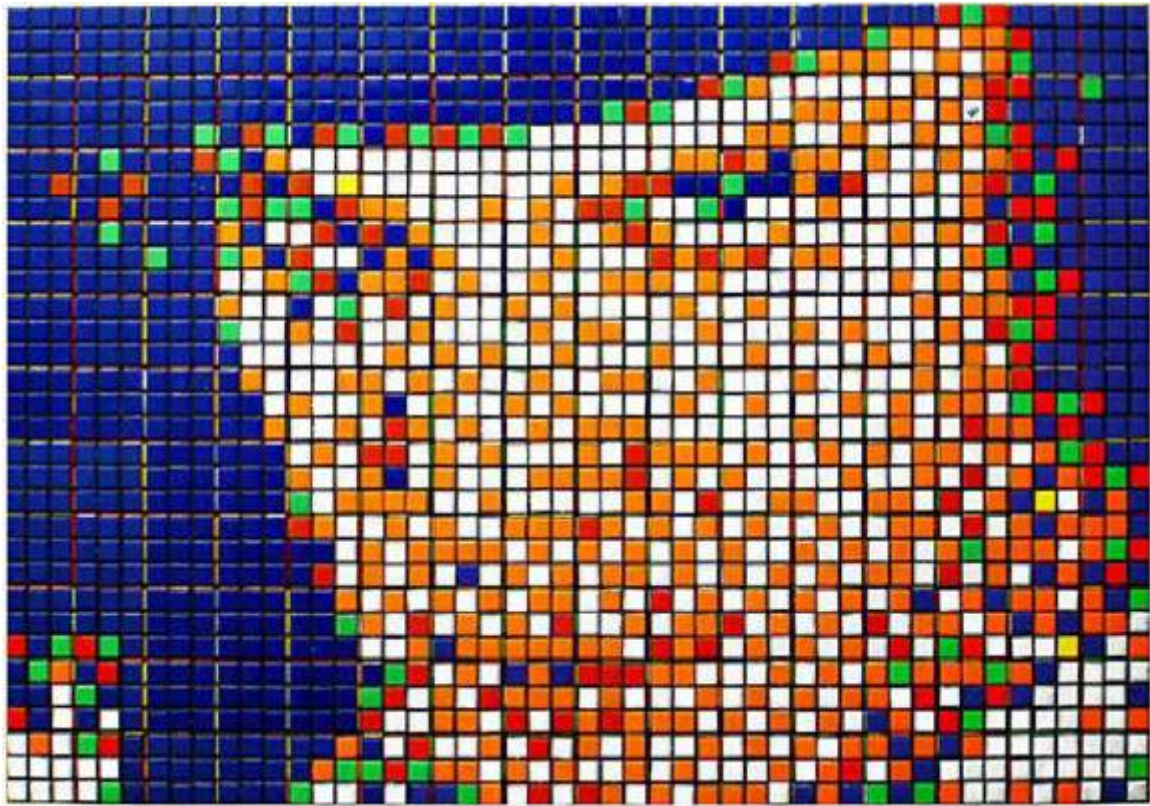
Oh...Alright, 2011

Embossed six color screenprint on paper

22 3/4 x 23 1/8 in. (58 x 59 cm)

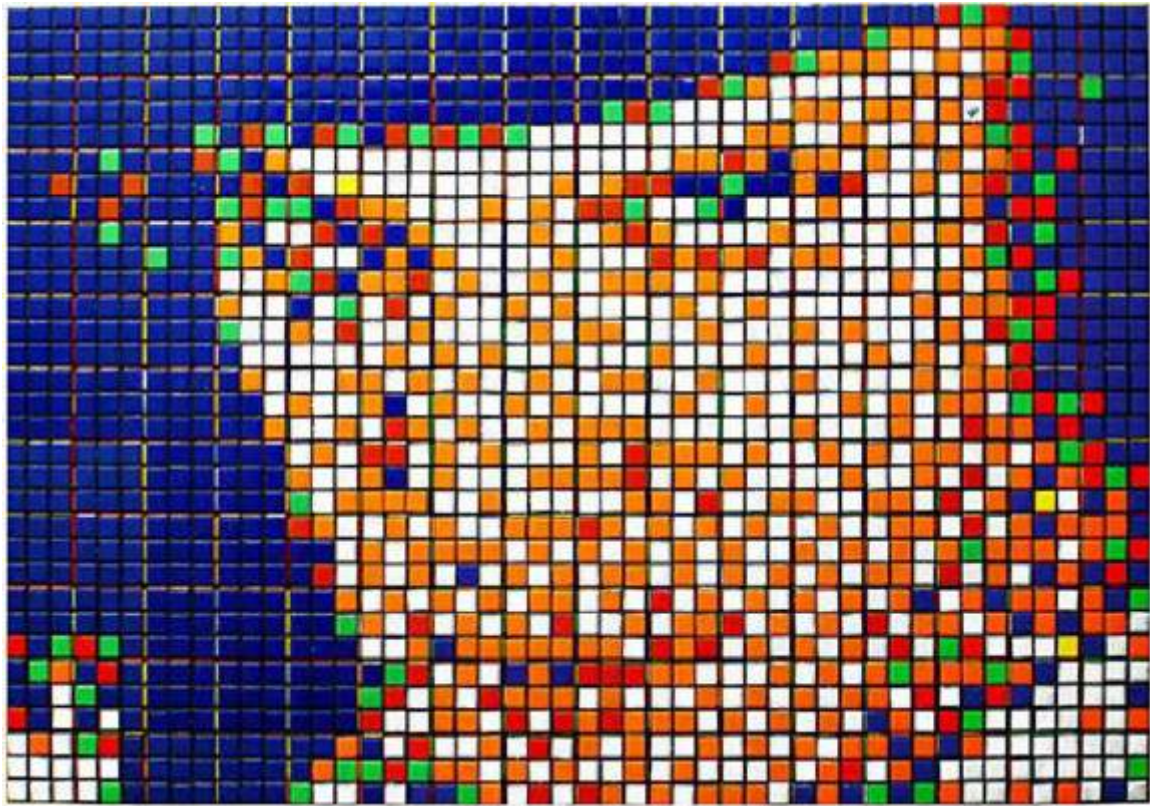
Edition of 150

Signed | Numbered



Invader (1969)

Rubik Kubrick I - Alex, 2006
Screenprint on paper
19 5/8 x 27 1/2 in. (50 x 70 cm)
Edition of 150
Signed | Numbered



Invader (1969)

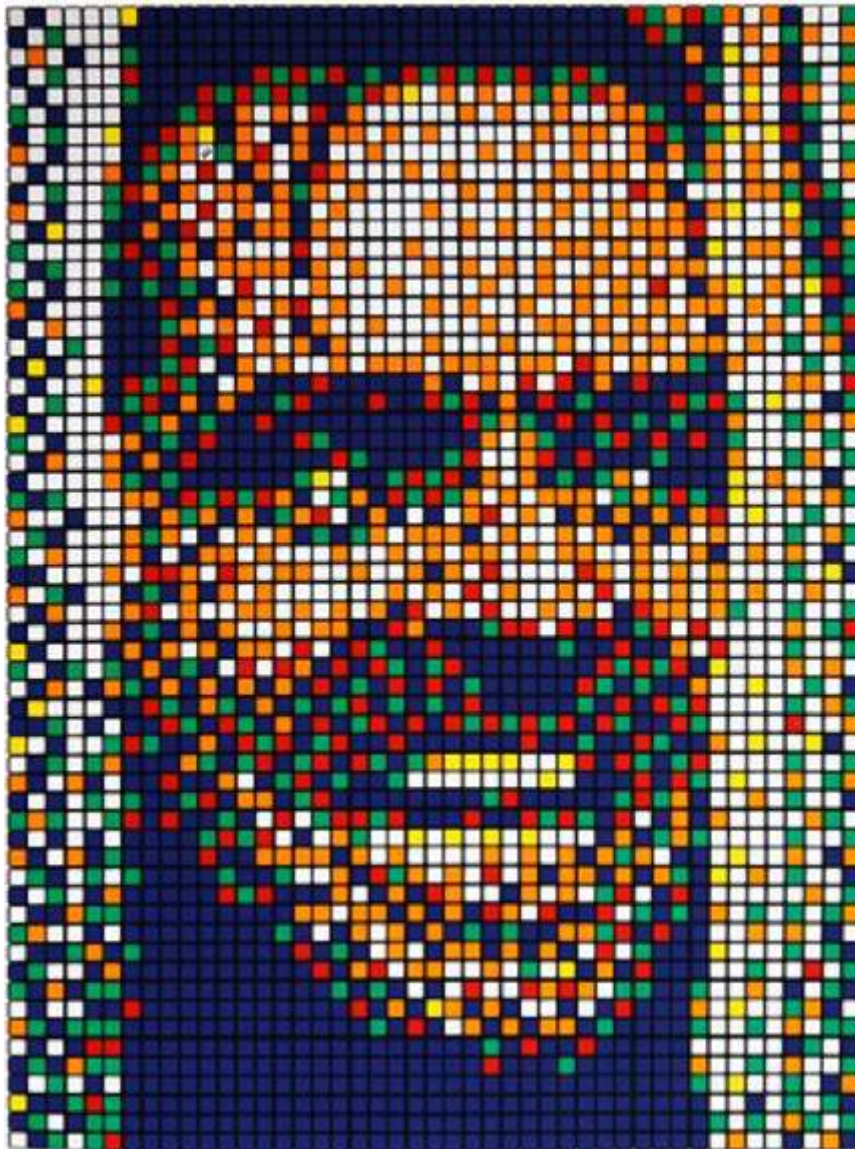
Rubik Kubrick I - Alex, 2006

Screenprint on paper

19 5/8 x 27 1/2 in. (50 x 70 cm)

Edition of 300

Stamped by Pictures On Walls



Invader (1969)

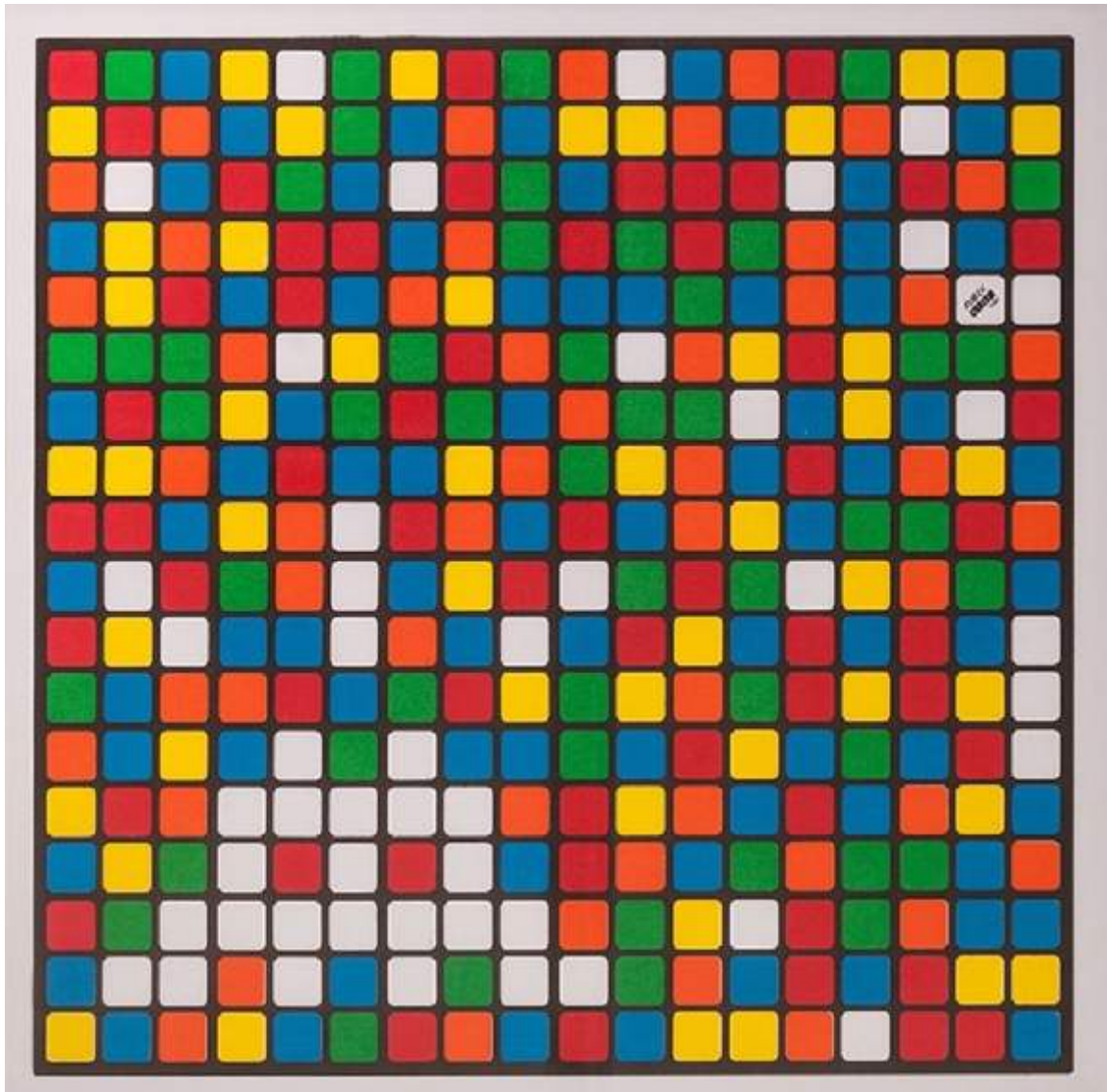
Rubik Kubrick II, 2007

Screenprint on paper

27 1/2 x 19 5/8 in. (70 x 50 cm)

Edition of 150

Signed | Numbered



Invader (1969)

Albino, 2006

Screenprint on paper

19 5/8 x 19 5/8 in. (49.9 x 49.9 cm)

Edition of 100

Stamped by Pictures On Walls

Maps / *Invaderoma*



Invasion of Rome by Invader, 2010 | Rome, Italy

By 2010, Invader had “conquered” Paris, Los Angeles, and London, spreading his imagery throughout the streets of each city while documenting his invasions with maps and a point system correlating to the difficulty of each installation. The maps were meant for his fans to follow along in his game, allowing the biggest Invader followers to score points upon discovering a mosaic and participate in the invasion from a spectator’s point of view.

Invader began his next project in Rome, self-titled *Invaderoma*, and over a period of less than three weeks, the artist successfully installed 75 tile mosaics throughout the city’s vias, piazzas, and villas on a variety of architectural structures, enabling Invader’s mosaics to become part of the ancient city’s contemporary décor.



Invader (1969)

Pronto Intervento (Red), 2010

Screenprint on paper

8 3/4 x 19 5/8 in. (22.5 x 50 cm)

Edition of 30

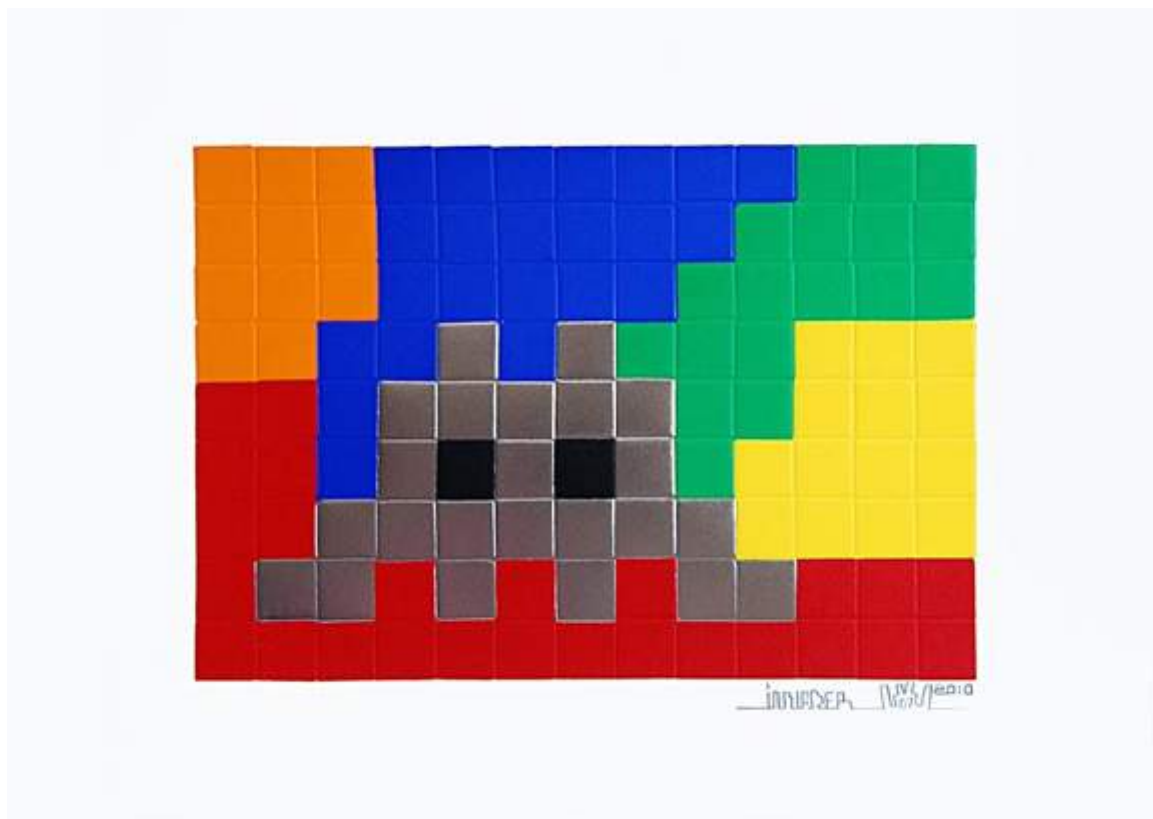
Signed | Numbered

Home



Home Suite as part of Game On! The Art of Invader, 2017 | Tagliatella Galleries | New York, NY

One of the most sought-after editions by the artist is the *Home* series, featuring Invader characters on their “home” planets of Earth, Mars, Neptune, and the Moon, and two works inspired by *LEGO* and the artist’s love for classic toys and games. Each of these works are signed, numbered, and embossed to recreate the look of Invader’s tile mosaics.



Invader (1969)

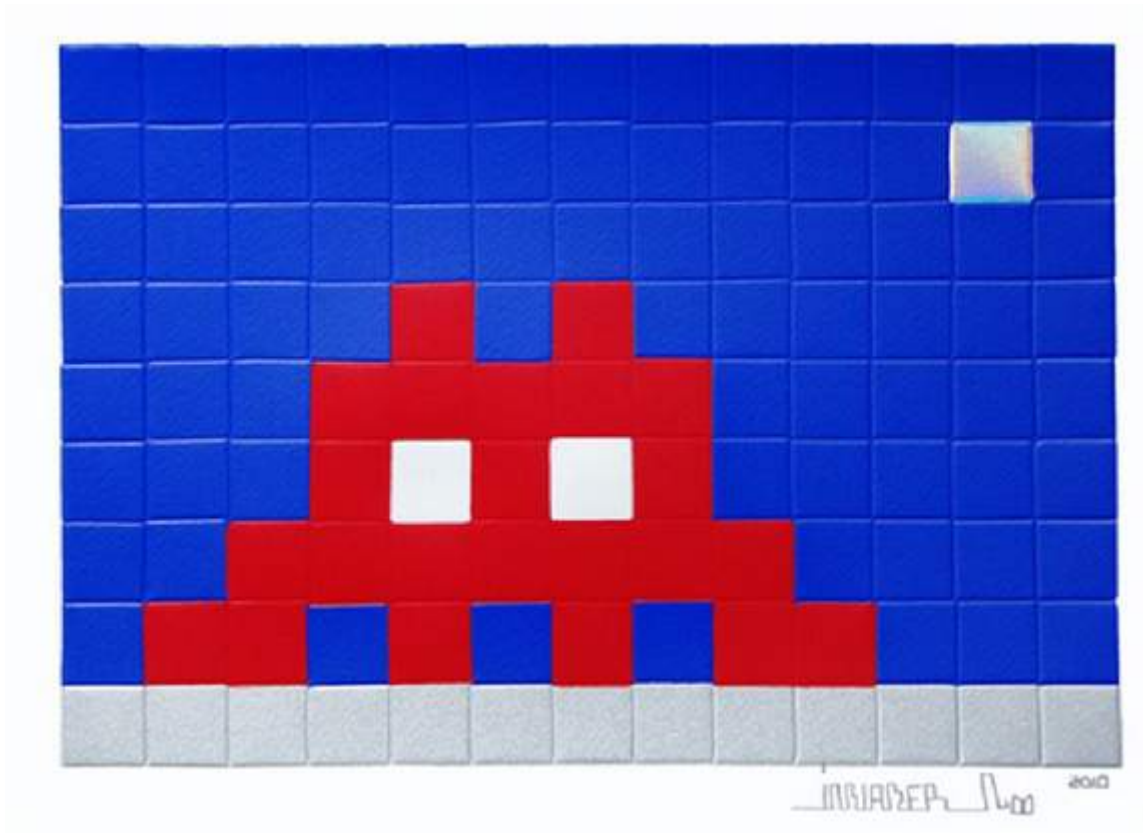
Home - Lego Silver, 2010

Embossed screenprint with foil on paper

11 1/2 x 16 1/2 in. (29.5 x 42 cm)

Edition of 25

Signed | Numbered



Invader (1969)

Home - Moon, 2010

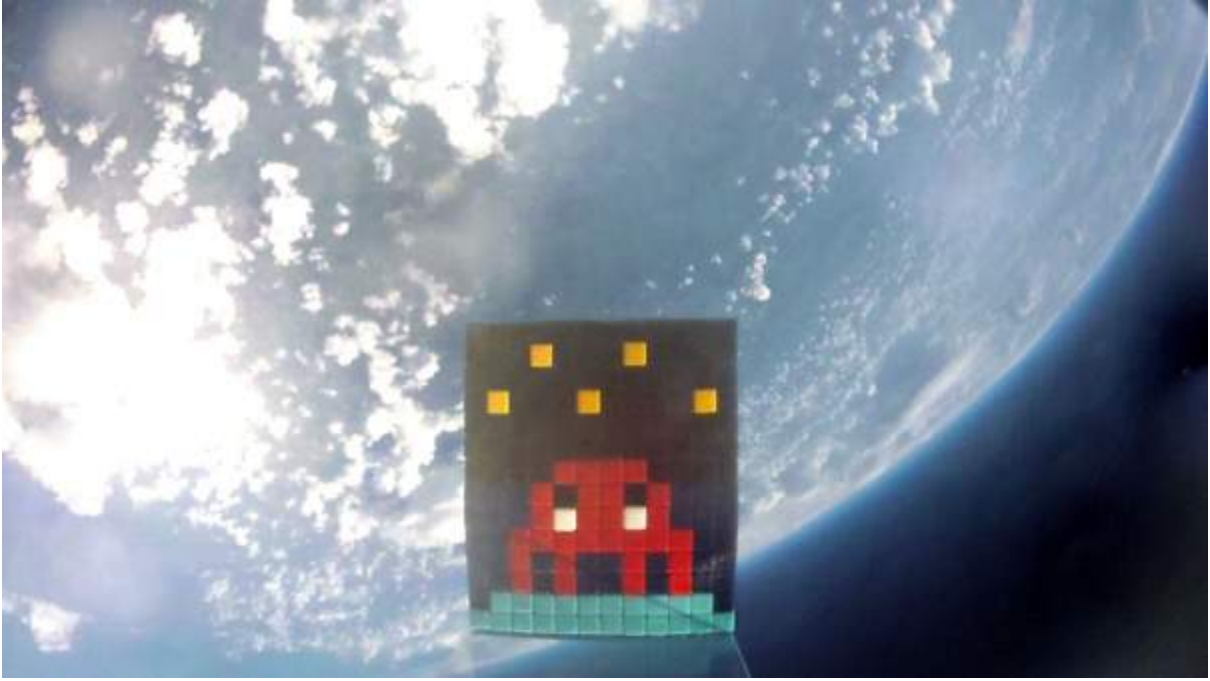
Embossed screenprint with foil on paper

11 1/2 x 16 1/2 in. (29.5 x 42 cm)

Edition of 50

Signed | Numbered

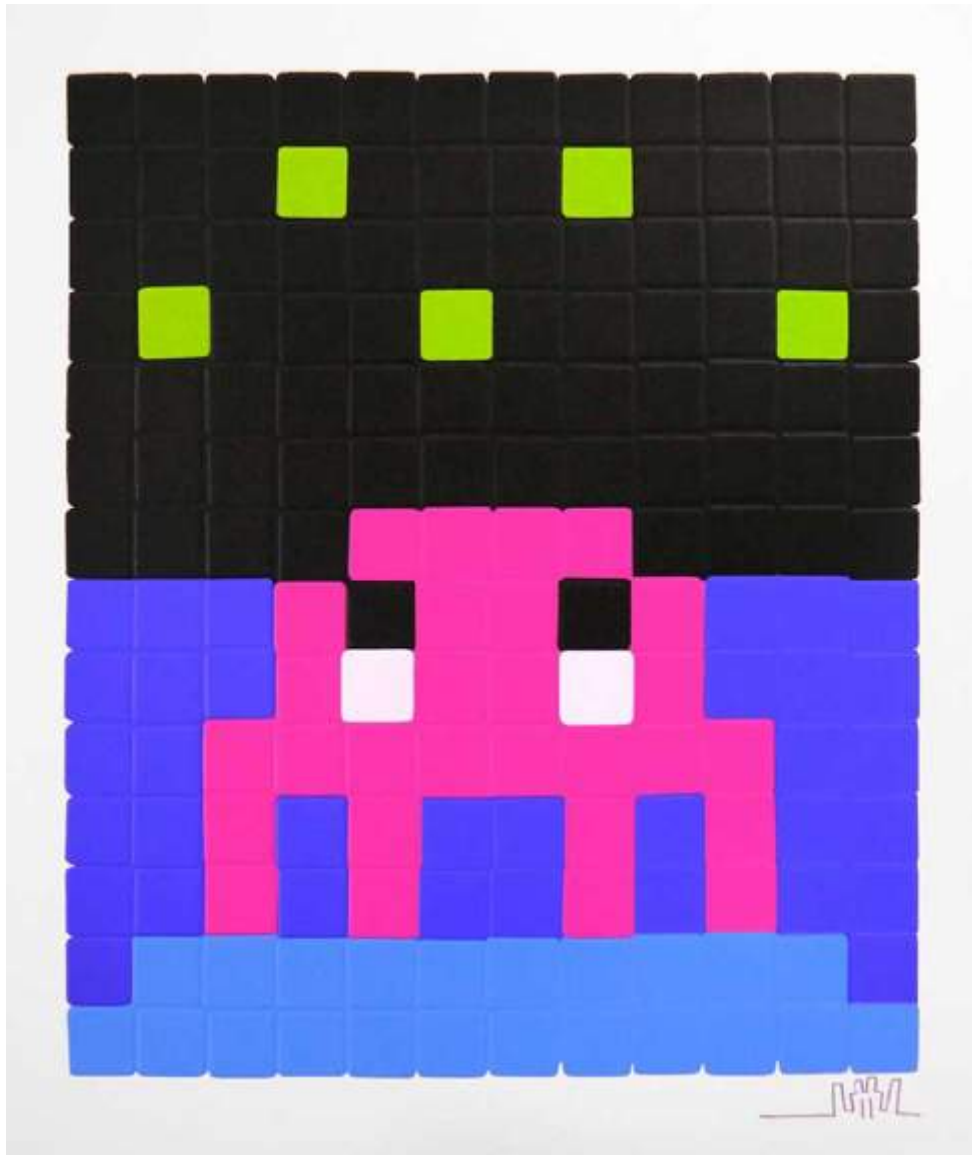
Mission Miami | Art4Space



Invader | *Space One (Red)*, 2015 | Piece sent to space | Outer Space

In 2012, Invader's dream to send one of his mosaic works into outer space became a reality. The mission led him to the backyard of NASA, near Cape Canaveral in Florida, where he would launch his art-carrying & documenting vessel toward the stars. Call it destiny because the artist known as Space Invader literally invaded space.

Not one to miss an opportunity, *Art4Space* allowed Invader to travel to Miami on a "mission" to invade his fifth major city. Nearly a decade late, fans of the artist still peruse South Beach in search of crab-like Invader mosaics, installed anywhere from the graffiti-laden walls of Wynwood, to classic Art Deco buildings, to the sandy boardwalks by the beach, to the institution that is Joe's Stone Crab restaurant just blocks from the Convention Center where Art Basel is hosted annually.



Invader (1969)

Space One (Pink), 2013

Embossed screenprint on paper

15 x 14 3/4 in. (38 x 37.5 cm)

Edition of 70

Signed | Numbered



Invader (1969)

Mission Miami Mosaic Cover Book, 2012

Mosaic tiles on book cover in a plexiglass box

9 3/4 x 8 1/4 x 1 3/8 in. (25 x 21 x 3.5 cm)

Edition of 50

Signed | Numbered

Pac Man | Aladdin Sane



Aladdin Sane, 2014 | Full set on view at Invader: Prints on Paper | Mglc, Slovenia

Inspired by his love of early video games, Invader recreates the magic of 8-bit characters, bringing them to life in the real world with mosaics, drawings, sculptures, and limited edition prints. While most of the iconic images from your local 1980's arcade are fair "game" to Invader, Pac Man is arguably the artist's most revisited subject, after his many characters from *Space Invaders*.

Prisoners was the artist's first Pac Man-themed print, signed and numbered as a limited edition in 2007, followed by the *Aladdin Sane* series in 2014. *Aladdin Sane* is one of Invader's most popular series, inspired by David Bowie's painted face from the cover of his famous album with the same name.



Invader (1969)

Aladdin Sane (Blue), 2014

Embossed four color screenprint on paper

17 5/8 x 16 7/8 in. (45 x 43 cm)

Edition of 65

Signed | Numbered



Invader (1969)
Aladdin Sane (Orange), 2014
Embossed four color screenprint on paper
17 5/8 x 16 7/8 in. (45 x 43 cm)
Edition of 65
Signed | Numbered



Invader (1969)

Aladdin Sane (Pink), 2014

Embossed four color screenprint on paper

17 5/8 x 16 7/8 in. (45 x 43 cm)

Edition of 65

Signed | Numbered



Invader (1969)

Aladdin Sane (Yellow), 2014

Embossed four color screenprint on paper

17 5/8 x 16 7/8 in. (45 x 43 cm)

Edition of 65

Signed | Numbered



Invader (1969)

Aladdin Sane (Gold), 2014

Embossed screenprint with foil on paper

17 5/8 x 18 3/8 in. (44.9 x 46.8 cm)

Edition of 30

Signed | Numbered



Invader (1969)

Aladdin Sane VIP (Silver), 2014

Embossed screenprint with foil

17 5/8 x 16 7/8 in. (45 x 43 cm)

Edition of 25

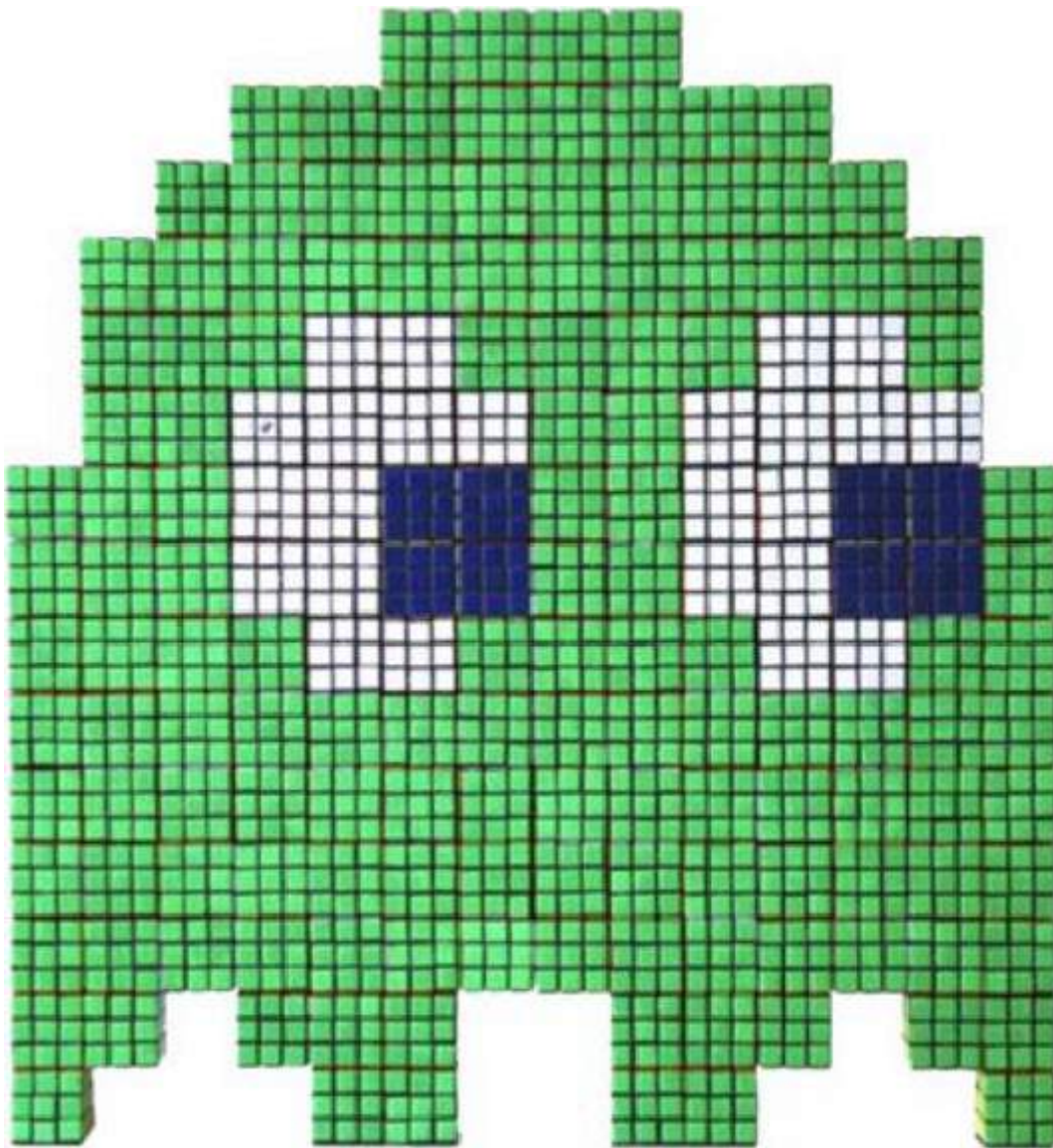
Signed | Numbered

Green Rubik Phantom



Phantom Set, 2007 | The Streets of Europe Exhibition | Jonathan Levine Gallery, New York, NY

Seen here in 2007, the three Rubik Phantom originals were displayed in “The Streets of Europe” exhibition at Jonathan Levine Projects in New York City. In 2017 Tagliatella Galleries also displayed the Red Rubik Phantom in “Game On! The Art of Invader”. Since then the red version has sold at public auction for over a quarter million dollars and the orange version has been on display at a museum in Italy. As one of the most iconic original works by the artist, Tagliatella is thrilled to have the green version on display for 1UP.



Invader (1969)

Green Rubik Phantom, 2007

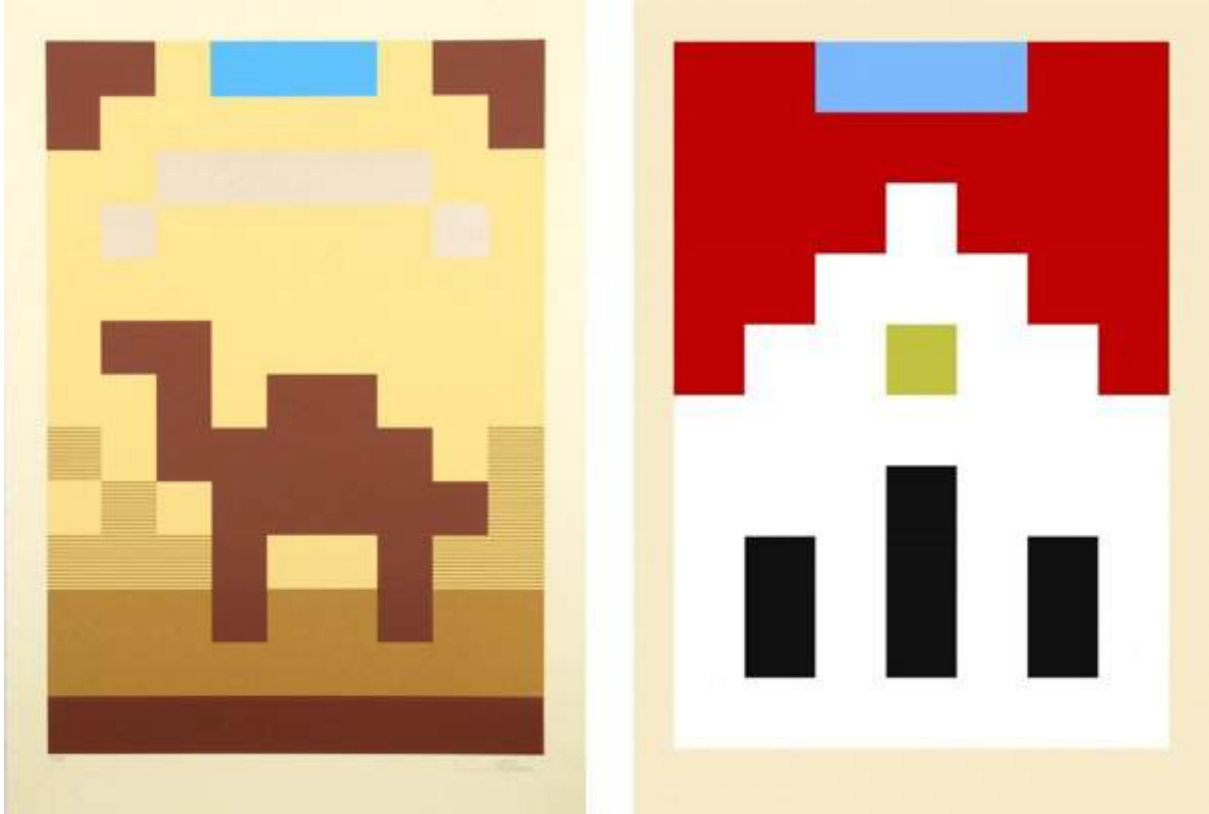
Rubik cubes on plexiglass panel

31 x 33 x 3 in. (78.7 x 83.8 x 7.6 cm)

Signed

Unique

Provocateurs



In 2014 the *Provocateurs* portfolio was a collaboration between 10 artists who agreed to produce a set of affordable, limited edition screenprints on paper, meant for fans and collectors who might not otherwise be able to collect their works. Invader participated by creating his version of the Marlboro cigarette pack, followed one year later by Marlboro's historical counterpart, Camel.



Invader (1969)

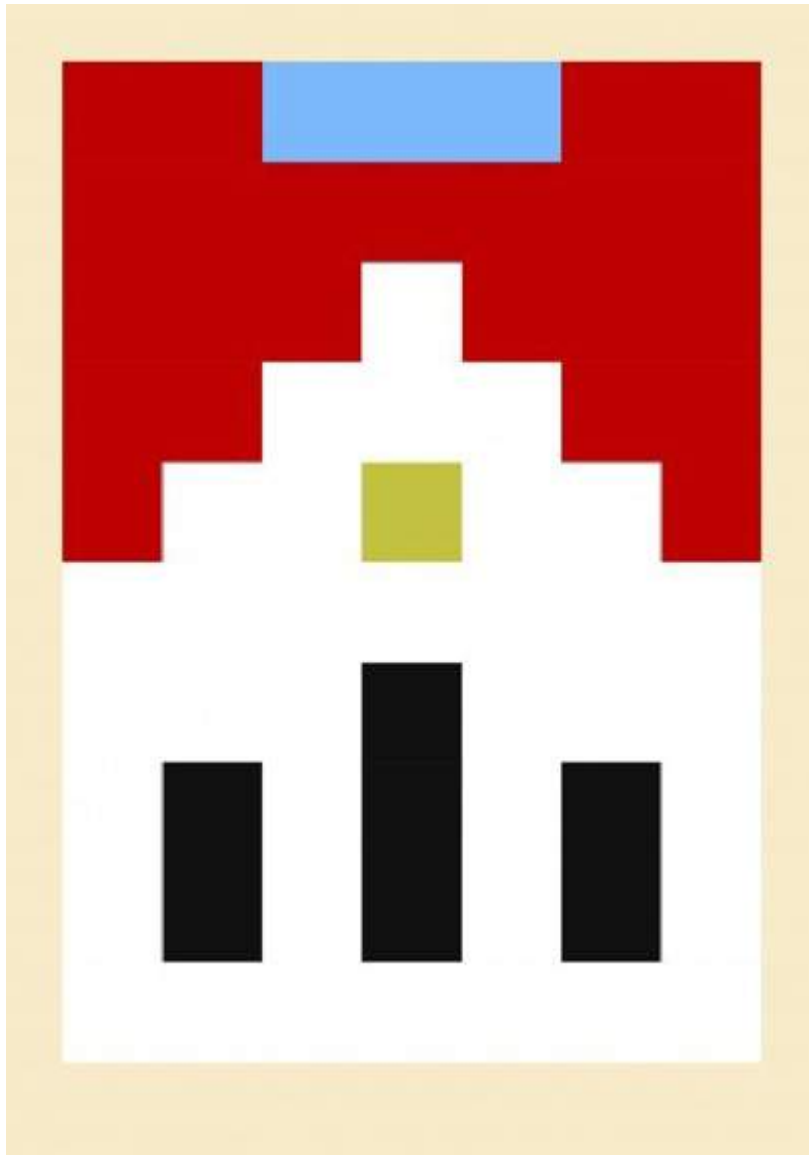
Camel, 2015

Six color silkscreen on paper

34 x 24 in. (86.4 x 61 cm)

Edition of 100

Signed | Numbered



Invader (1969)

Marlboro (Provocateurs Portfolio), 2014

Screenprint on paper

34 x 24 in. (86.4 x 61 cm)

Edition of 200

Signed | Numbered

Wipe Out | Hong Kong

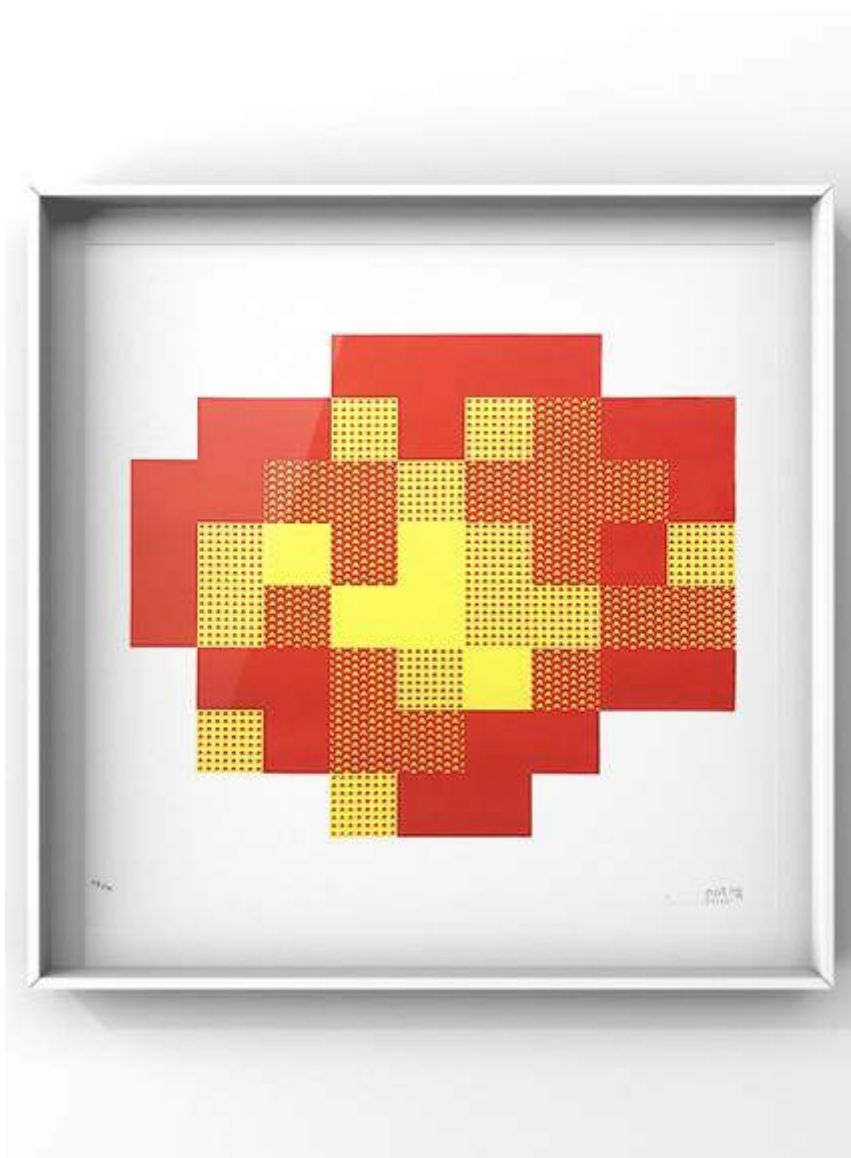


Invader | *Wipe Out* Exhibition, 2015 | Hong Kong

In 2014, Invader embarked on his sixth Invasion, but this time, aiming to conquer Hong Kong. The artist had many prior trips, or “waves,” through the area, and many of his pop culture inspirations originated in that part of the world, including the cartoon character Hong Kong Phooey, actor Bruce Lee, Pac Man, and many other classic arcade games, like Kung Fu.

By now, the artist’s beloved scooter had seen more invasions than even his invasion maps could count, carrying the artist from city to city and country to country while he installed tiles and cubes along the way. As a tribute to his travel companion and cohort, Invader produced a special limited edition lithograph (numbered to 88 for good luck to the locals), of his famed scooter, which had been tagged by friends and fellow graffiti artists who met Invader over the years. The artist successfully invaded Hong Kong with 75 different installations, including one character constructed of vintage tiles from France circa the 1930’s.

Tagliatalatella is excited to display a massive Rubikcubism compilation mimicking that of an 8-bit video game explosion, entitled “Wipe Out” and originally displayed at the 2015 exhibition.



Invader (1969)

Explosion, 2015

Screenprint on paper

21 5/8 x 21 5/8 in. (55 x 55 cm)

Edition of 50

Signed | Numbered



Invader (1969)

Kung Fu Club, 2015

Silkscreen on archival paper

21 5/8 x 21 5/8 in. (55 x 55 cm)

Edition of 50

Signed | Numbered



Invader (1969)

Scooter, 2015

Lithograph on archival paper

15 5/8 x 23 1/2 in. (40 x 60 cm)

Edition of 88

Signed | Numbered



Invader (1969)

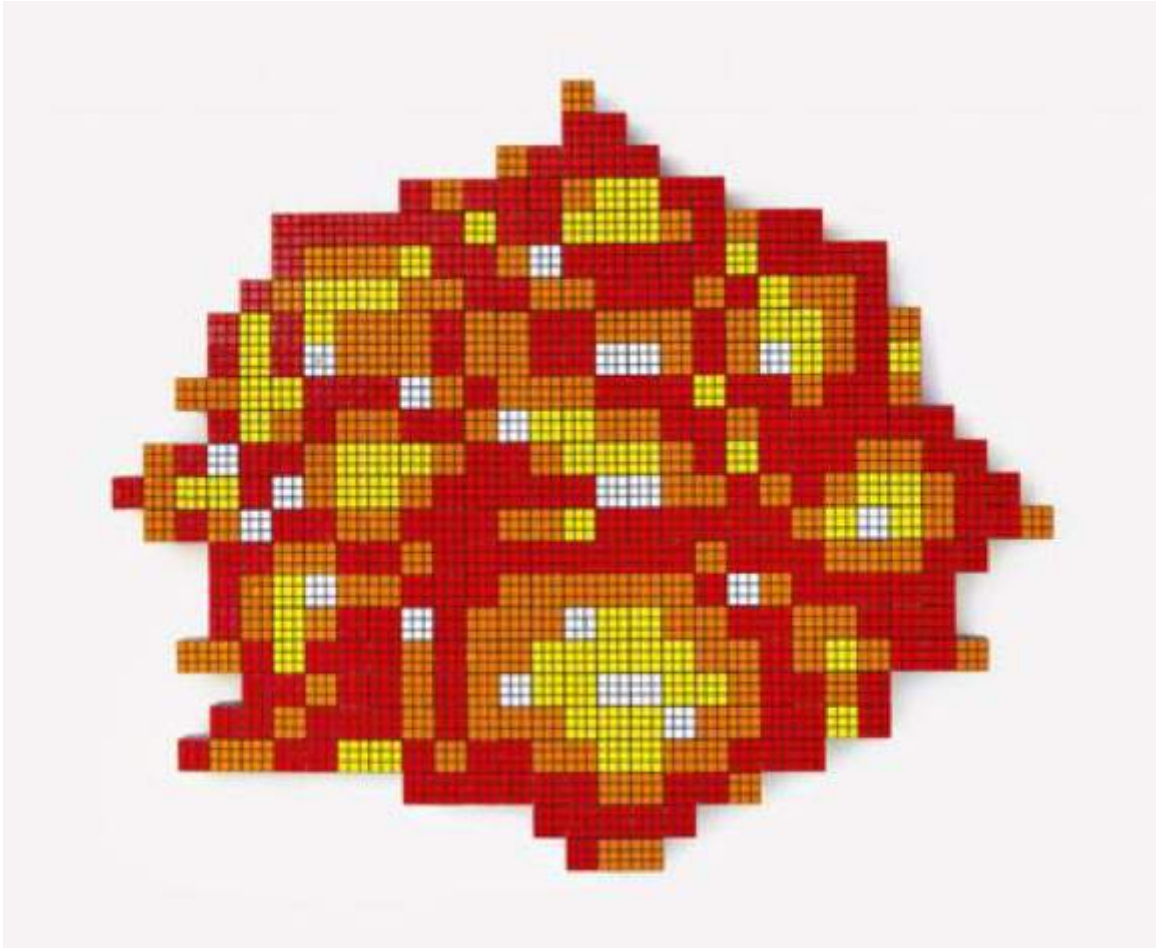
Sea Of Slime, 2014

Screenprint in colors on paper

20 x 12 in. (50.8 x 30.5 cm)

Edition of 50

Signed | Dated | Numbered



Invader (1969)

Rubik Wipe Out, 2018

Rubik cubes on plexiglass panel

62 1/2 x 55 in. (159 x 140 cm)

Signed | Dated

Unique

Hello My Game Is | Musée en Herbe, Paris



Installation photo of *Hello MY Game Is* Exhibition | Paris, France

Hello My Game Is opened at Musée en Herbe in Paris in early 2017 as not only the first Invader exhibition in the artist's home city of Paris since 2011, but the first entirely dedicated museum exhibition for Invader. The exhibition title referenced the cliché sticker name tag: "Hello My Name Is", but to highlight Invader's favorite muse: video games.

On *Hello My Name Is* Invader was quoted: "I have myself often drawn inspiration from the world of childhood. Besides, who other than an adult with a child's soul could devote his life to invading the world with video game characters? Also, this exhibition is very close to my heart because children represent the future. Education and dialogue with children are the key to a good future for humanity and tomorrow's world."

Tagliatella Galleries is thrilled to have the iconic "Super Mario III" original tile mosaic on display in *1UP*, which was first unveiled in Paris at *Hello My Game Is*.



Invader (1969)

Super Mario III, 2016

Ceramic mosaic tiles on perspex

26 1/2 x 32 in. (67.4 x 81.4 cm)

Signed

Unique

Into the White Cube | Los Angeles



Invader at *Into the White Cube* Exhibition | *Badge 6 (HUMANS SUCK!)*, 2018 | Los Angeles, CA

In 2018, Invader traveled to Los Angeles to take over the City of Angels with a “cast” of hollywood-centric characters, including mosaic film reels, odes to classic movies including *The Big Lebowski* and *Star Wars*, and works inspired by regional favorites of Southern California such as sunsets, avocados and of course legal marijuana Invader’s appropriately coined “Hollyweed”.

During his time in LA, representative gallery Over the Influence hosted a solo show called “Into the White Cube”, releasing various prints, tile-covered books, and a substantial collection of “Alias” works. An Alias is what Invader calls a work that he originally installed in public and later recreated as a studio piece, meant to be displayed on the walls of an apartment or house, or even to display within a “white cube” gallery/museum space.



Collection of mosaic pieces by Invader | *Into the White Cube* Exhibition | Los Angeles, CA



Invader (1969)

Alias LA_149, 2001/2018

Ceramic tiles on perspex

14 1/4 x 12 5/8 in. 36.2 x 32.2 cm)

Signed

Unique



Invader (1969)

Badge 6 (HUMANS SUCK!), 2018

Mixed media

24 x 24 in. (61 x 61 cm)

Signed | Dated

Unique



Invader (1969)

Invader/Kusama, 2018

Ink on glossy paper

8 1/4 x 10 5/8 in. (21 x 27 cm)

COA from OTI

Unique



Invader (1969)

Invader / Shaw, 2018

Ink on glossy paper

11 5/8 x 9 in. (29.5 x 22.9 cm)

Signed

Unique



Invader (1969)

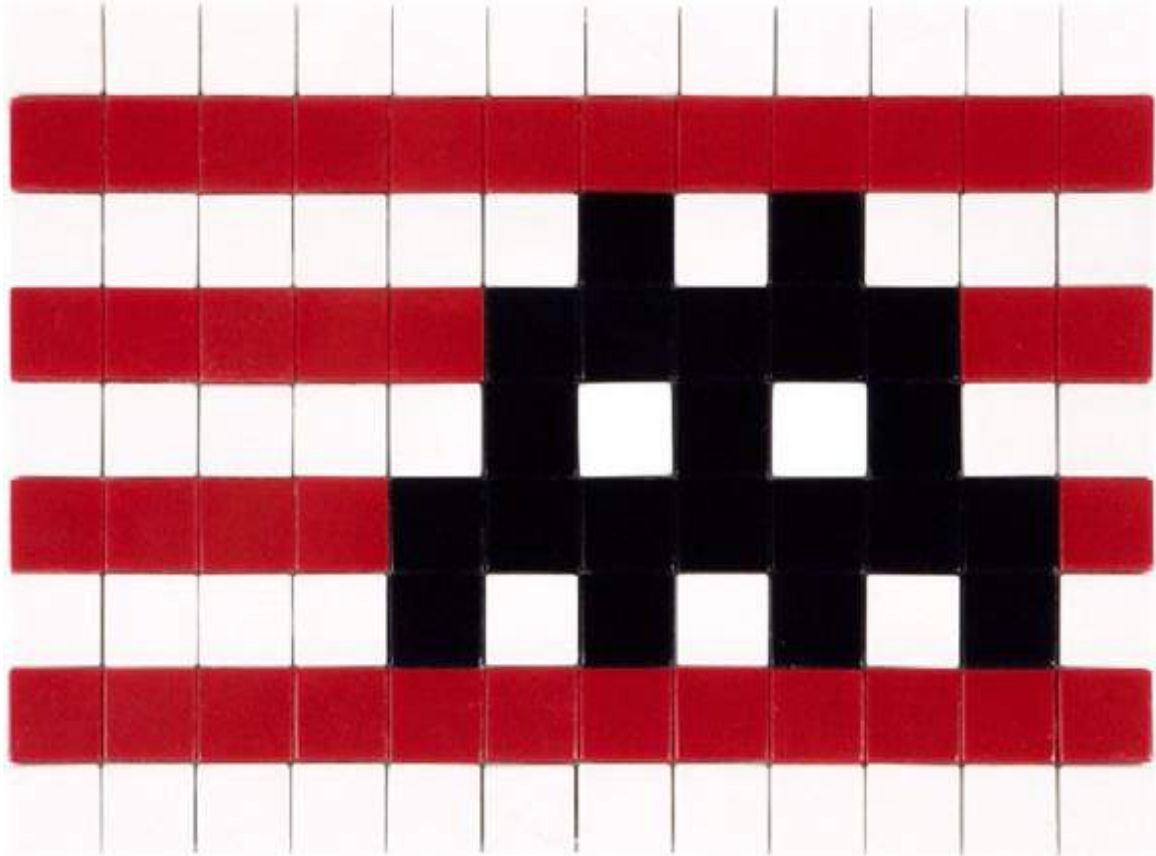
Intituled - 15, 2018

Mosaic tiles on book on perspex

12 x 9 5/8 x 2 1/4 in. (30.5 x 24.4 x 5.7 cm)

Signed

Unique



Invader (1969)

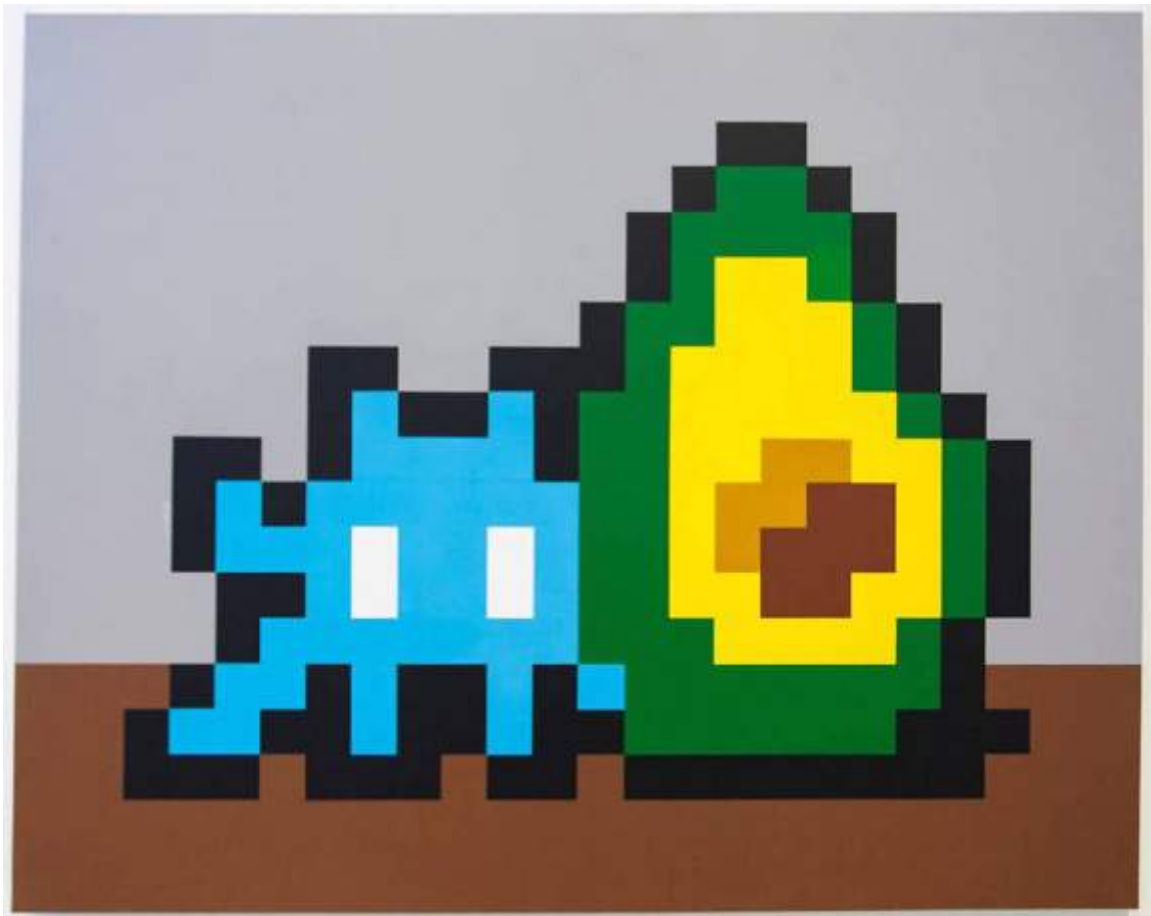
Invasion Kit # 18 L.A., 2018

Ceramic mosaic tiles

11 x 8 1/8 in. (28.2 x 20.7 cm)

Edition of 300

Signed | Numbered



Invader (1969)

Space Avocado, 2018

Acrylic on canvas

51 1/8 x 63 3/4 in. (130 x 162 cm)

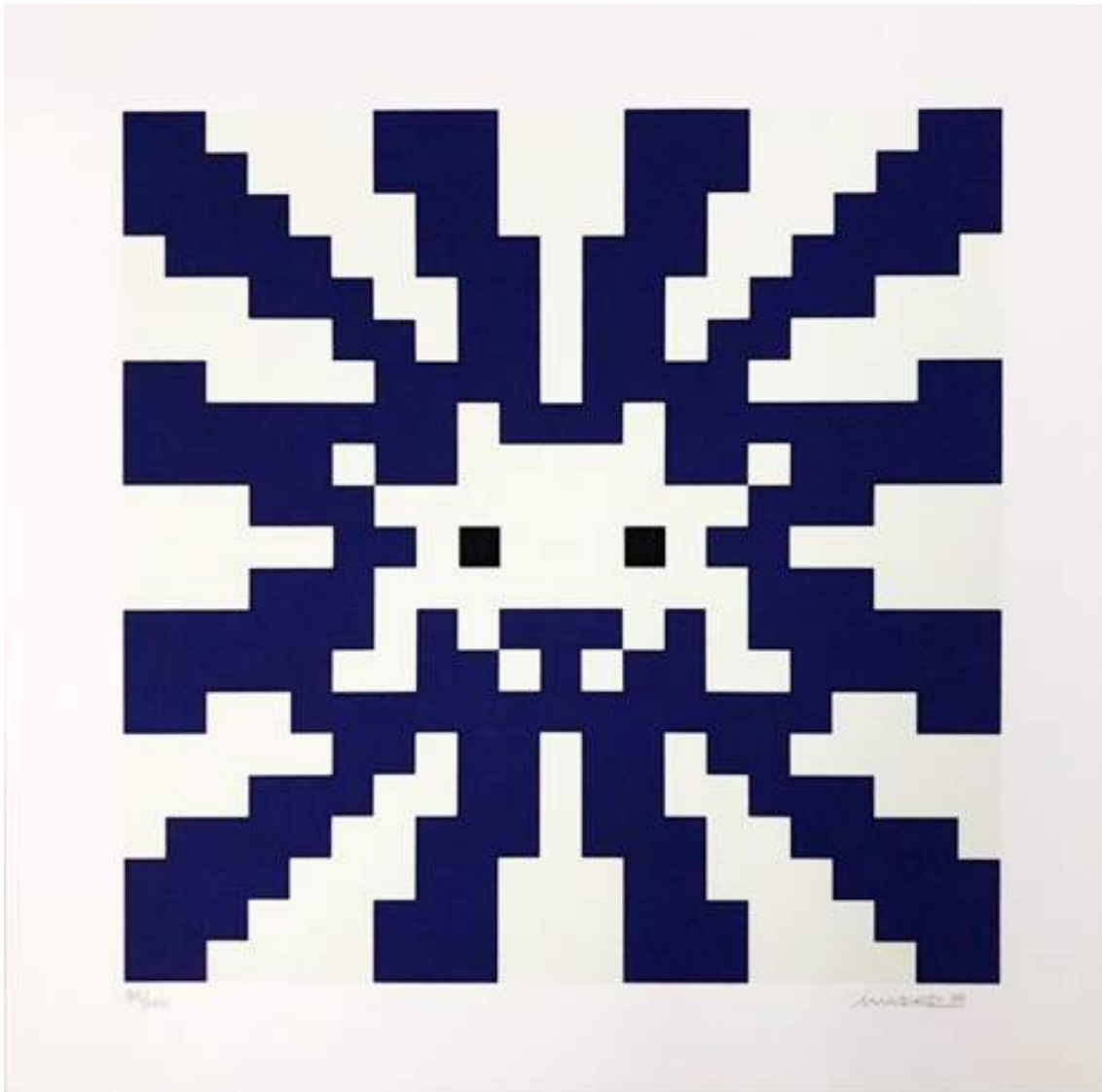
Signed

Unique



Invader (1969)

Sunset (Blue & Green), 2018
Embossed screenprint on paper
16 1/2 x 16 1/2 in. (41.9 x 41.9 cm)
Edition of 100
Signed | Numbered



Invader (1969)

Sunset (Blue and White), 2018
Embossed screenprint on paper
16 1/2 x 16 1/2 in. (41.9 x 41.9 cm)
Edition of 100
Signed | Numbered



Invader (1969)

Sunset (Gold & Blue), 2018
Embossed screenprint on paper
16 1/2 x 16 1/2 in. (41.9 x 41.9 cm)
Edition of 100
Signed | Numbered



Invader (1969)

Hollyweed (Brown Edition), 2018

Embossed screenprint on paper

22 x 16 in. (55.9 x 40.6 cm)

Edition of 100

Signed | Numbered



Invader (1969)

Hollyweed (Red Edition), 2018
Embossed screenprint on paper
22 x 16 in. (55.9 x 40.6 cm)
Edition of 100
Signed | Numbered



Invader (1969)

Versailles (Black), 2018

Embossed screenprint on paper

21 1/2 x 19 1/2 in. (54.6 x 49.5 cm)

Edition of 100

Signed | Numbered



Invader (1969)

Versailles (Blue), 2018

Embossed screenprint on paper

21 1/2 x 19 1/2 in. (54.6 x 49.5 cm)

Edition of 100

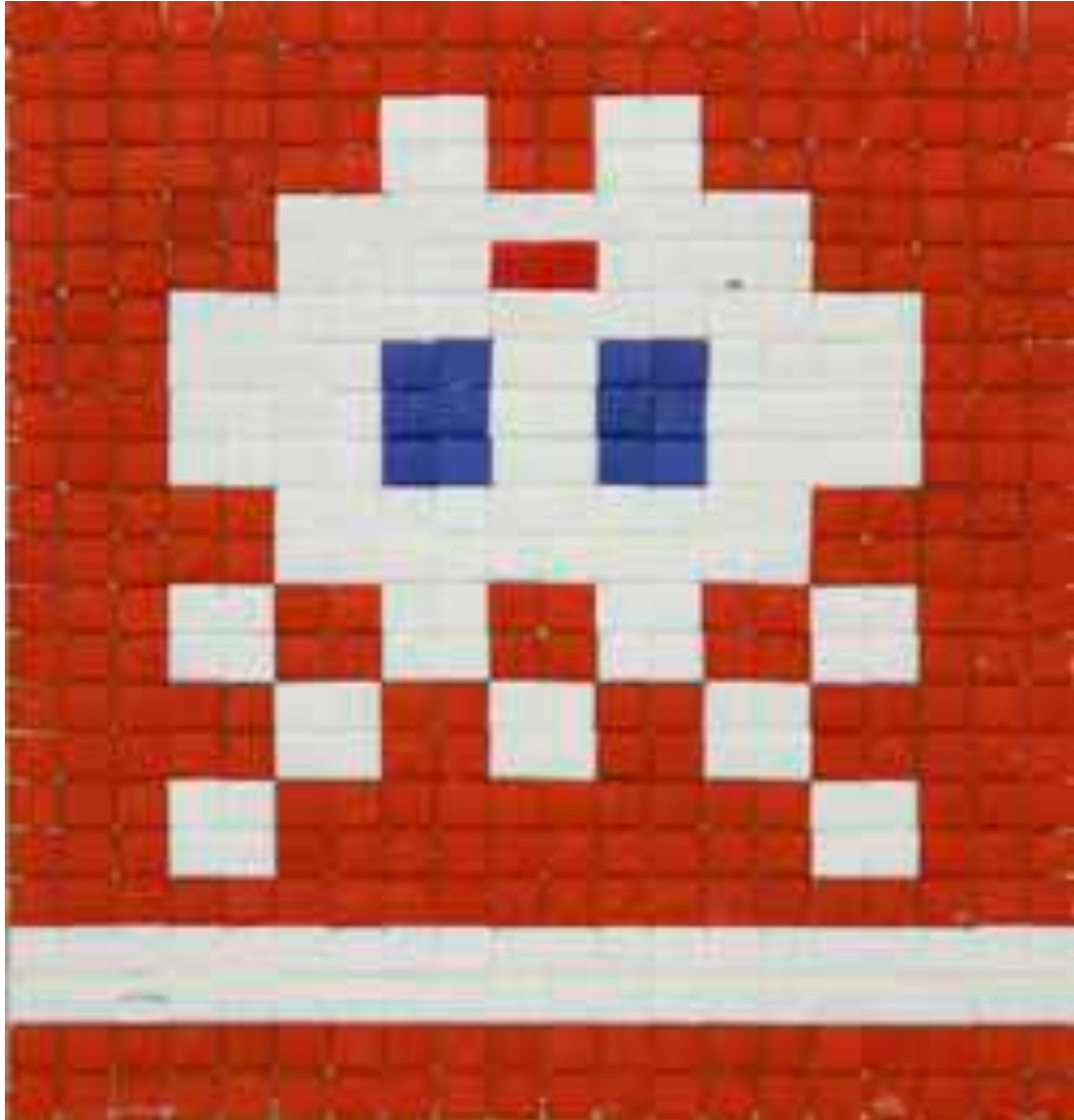
Signed | Numbered

World Invasion



Photo of Invader tile on the streets of Varanasi, India

To date, Invader has visited 79 countries, 5 continents, and installed close to 4,000 works. While Parisians are accustomed to seeing Invader mosaics on the streets of France, residents of countries including Bhutan, Morocco, Nepal, Slovenia and, most recently, Tunisia have been recently introduced to pixelated creatures and friends of the artist. Taglialatella Galleries has a variety of original works on display in *1UP*, including unique works from America, China, France, and even India.



Invader (1969)

Alias VRN_11 (Varanasi, India), 2011

Ceramic tiles on panel

15 3/4 x 18 1/8 in. (40 x 46 cm)

Signed

Unique



Invader (1969)

ALIAS AVI-32, 2000/2016

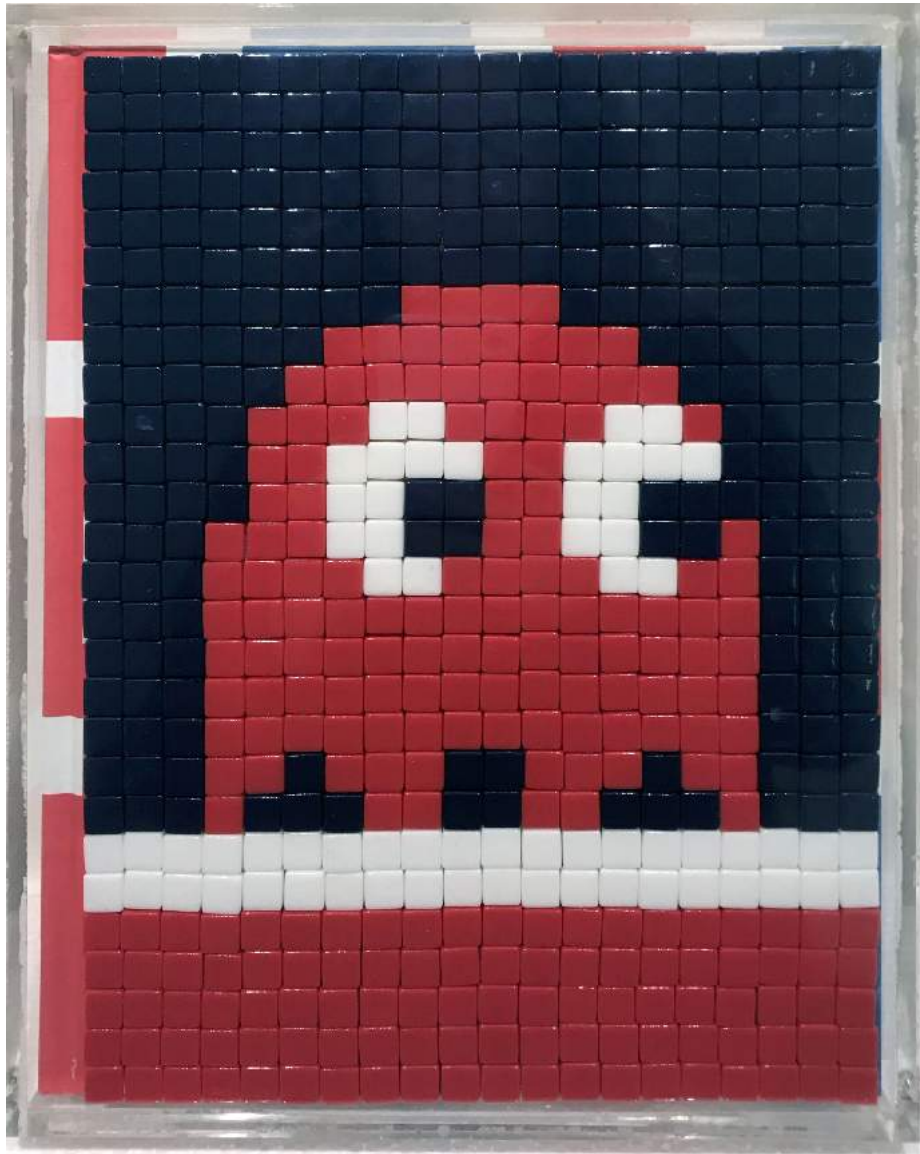
Ceramic tiles on perspex

6 1/8 x 7 3/4 in. (15.8 x 19.7 cm)

Accompanied by signed "ID Card" COA issued in 2016

Signed

Unique



Invader (1969)

Invasion In the U.K. Book, 2007

Mosaic tiles on book cover in plexiglass box

11 1/2 x 9 x 1 3/4 in. (29.2 x 22.9 x 4.5 cm)

Edition 34 of 50



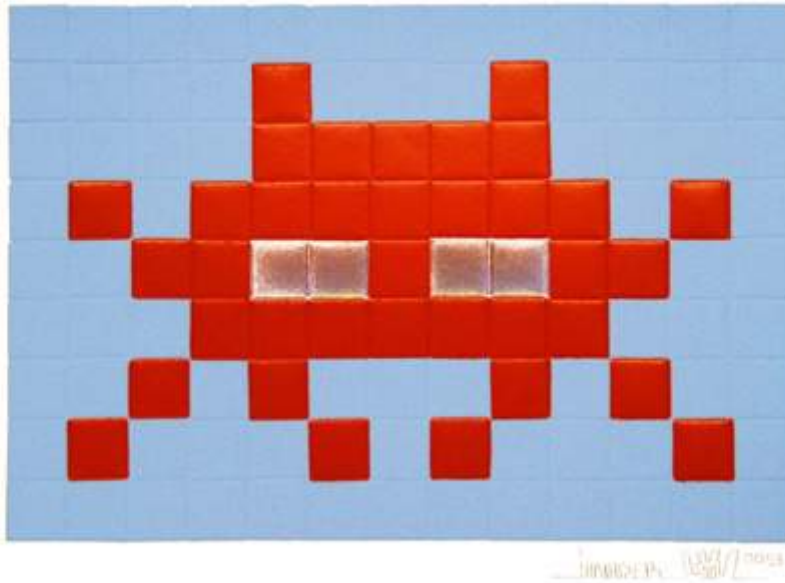
Invader (1969)

Invasion In the U.K. Book, 2007

Mosaic tiles on book cover in plexiglass box

11 1/2 x 9 x 1 3/4 in. (29.2 x 22.9 x 4.5 cm)

Edition 39 of 50



Invader (1969)

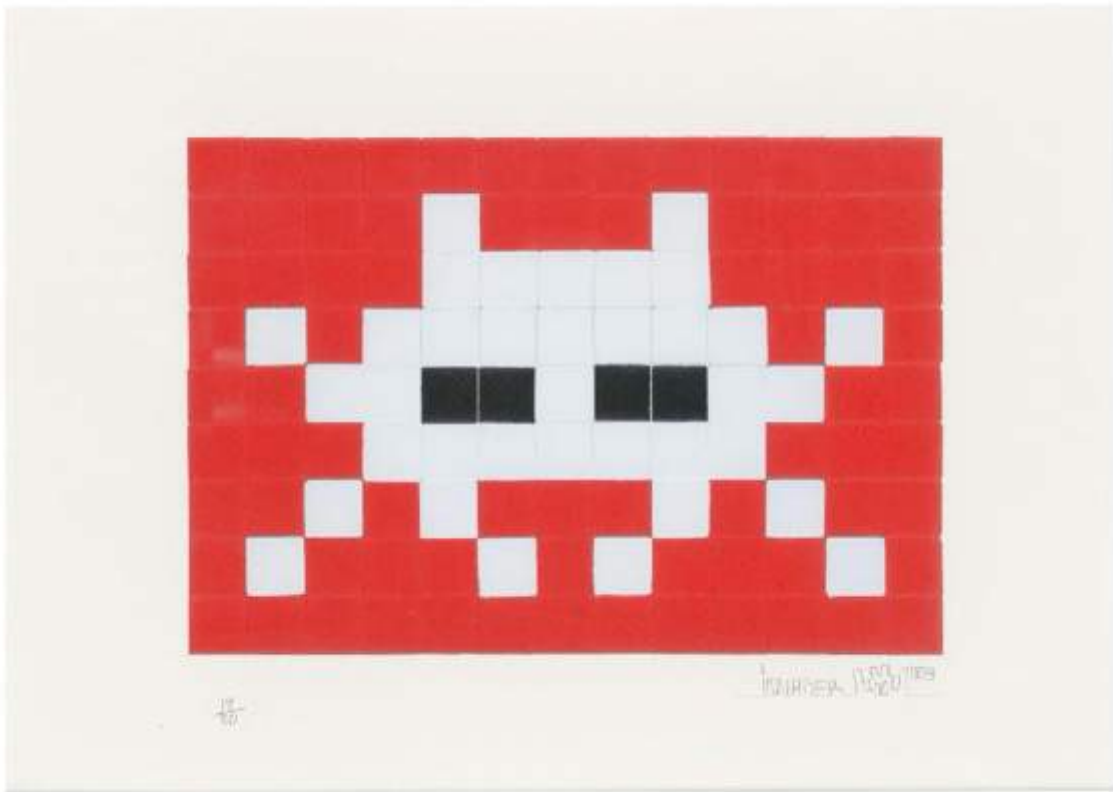
Invasion (Red), 2009

Embossed screenprint with foil on paper

16 1/2 x 11 1/2 in. (29.2 x 41.9 cm)

Edition of 50

Signed | Numbered



Invader (1969)

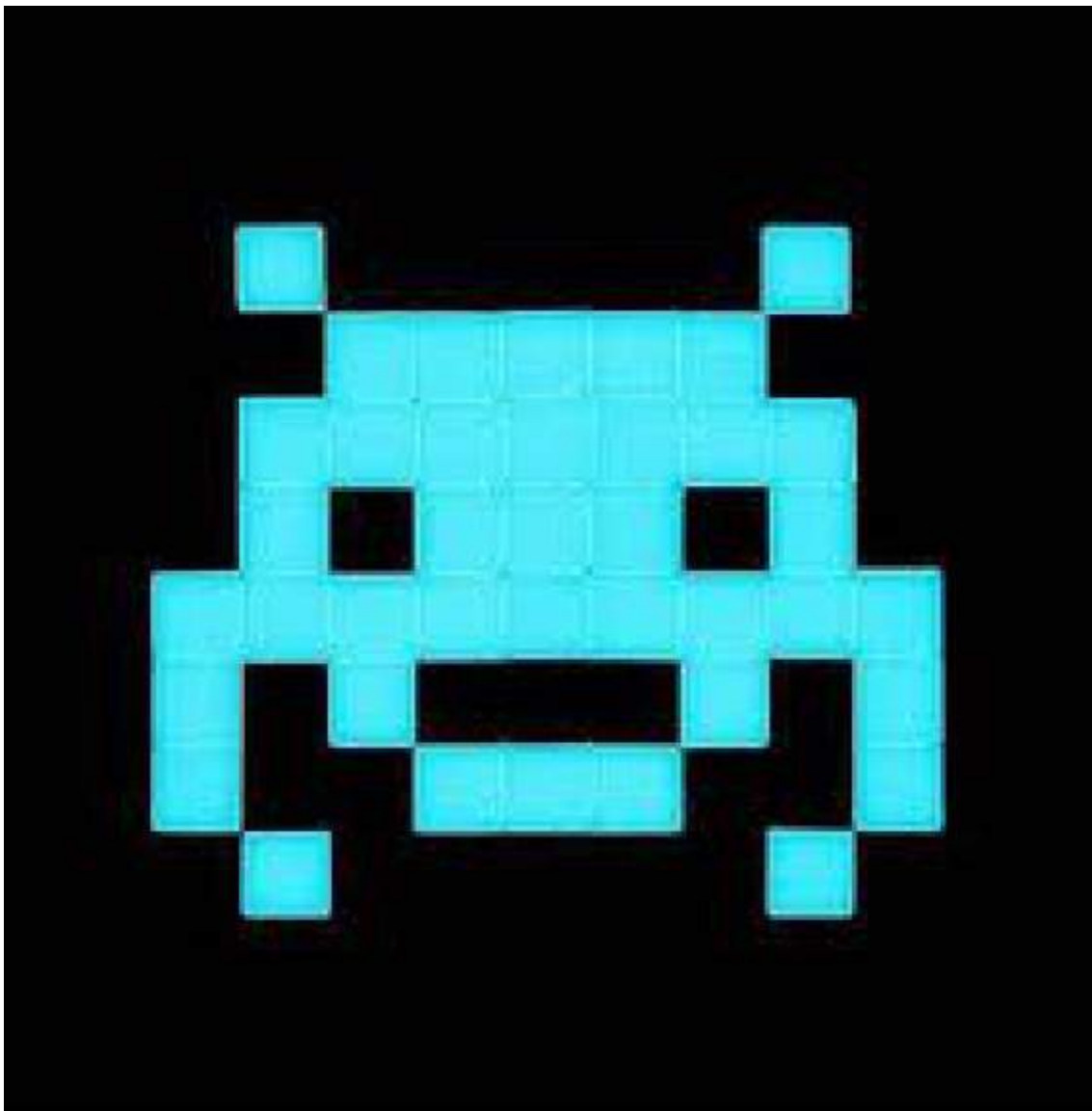
Invasion (White), 2009

Embossed screenprint with foil on paper

16 1/2 x 11 1/2 in. (29.2 x 41.9 cm)

Edition of 50

Signed | Numbered



Invader (1969)

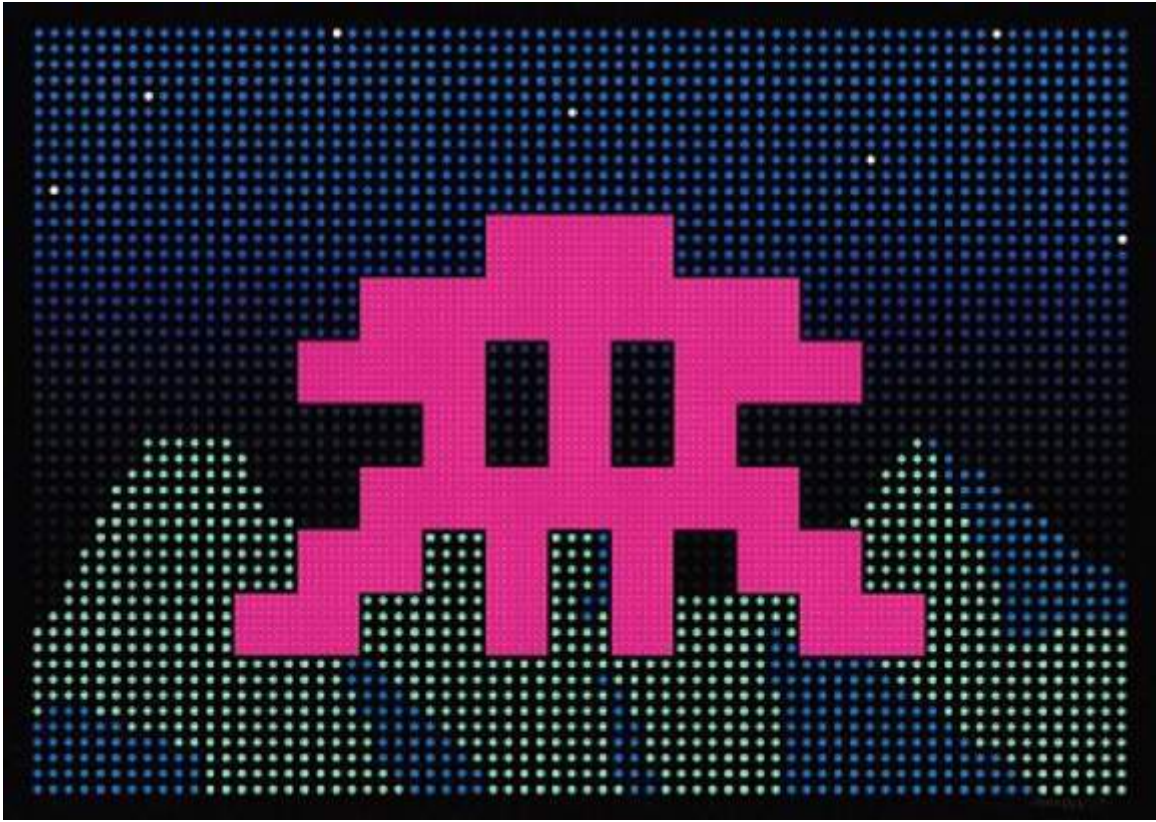
Invasion Kit # 15 - Glow in Space, 2013

Ceramic mosaic tiles

24 x 26 in. (61 x 66 cm)

Edition of 200

Signed | Numbered



Invader (1969)

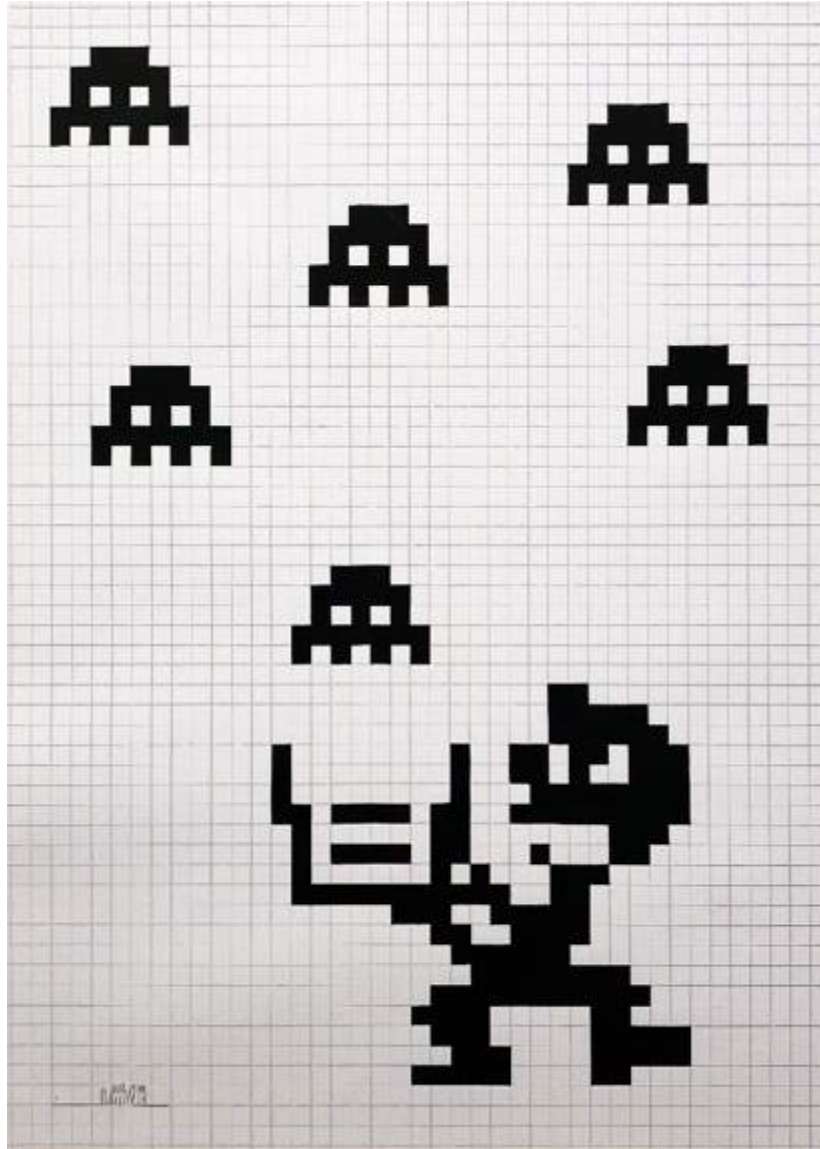
L.E.D., 2017

Screenprint on paper

19 5/8 x 27 1/2 in. (50 x 70 cm)

Edition of 100

Signed | Numbered



Invader (1969)

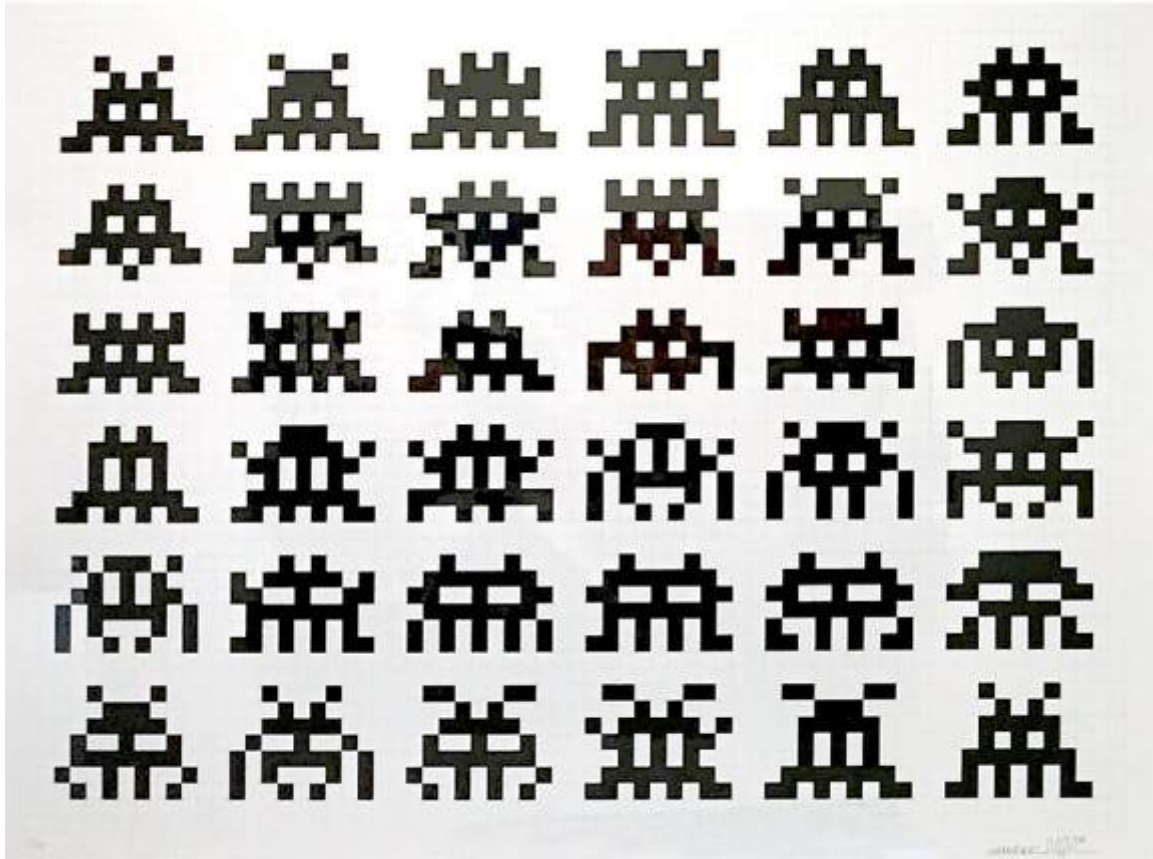
Black and White Game & Watch, 2017

Acrylic and silkscreen on paper

27 1/2 x 19 5/8 in. (70 x 50 cm)

Signed

Unique



Invader (1969)

Repetition Variation Evolution, 2017

Screenprint on paper

26 3/4 x 34 5/8 in. (68 x 88 cm)

Edition of 150

Signed | Numbered



Invader (1969)

Binary Code (Black), 2008

Screenprint on paper

19 5/8 x 27 1/2 in. (49.9 x 69.8 cm)

Edition of 50

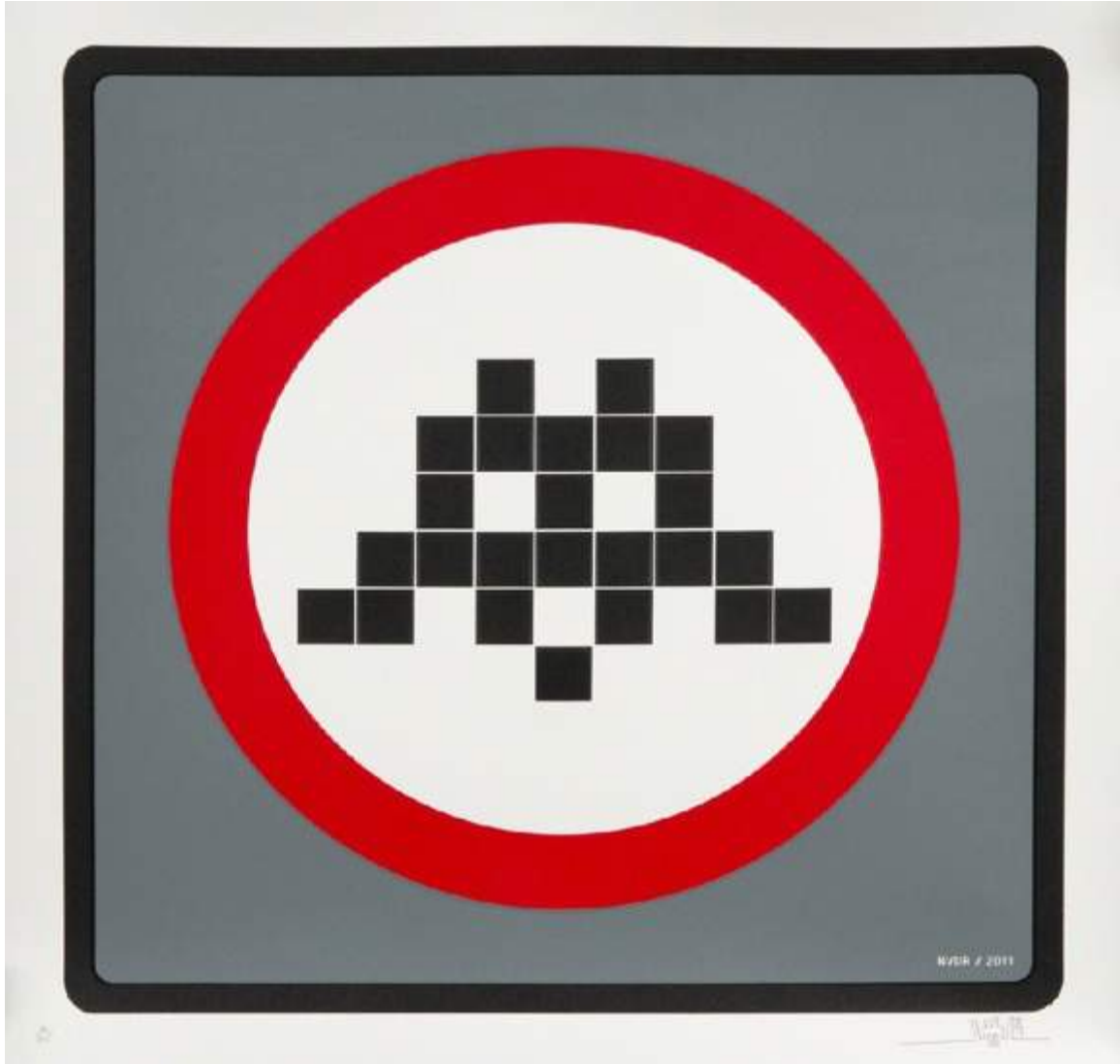
Signed | Numbered



Invader (1969)
Hypnosis, 2011
Woodcut on paper
11 3/4 x 9 3/4 in. (30 x 25 cm)
Edition of 2 PP
Signed | Numbered



Invader (1969)
The Scream, 2011
Woodcut on paper
12 3/8 x 8 1/4 in. (31.5 x 21 cm)
Edition of 2 PP
Signed | Numbered



Invader (1969)

Warning (Grey), 2011

Screenprint on paper

21 1/4 x 21 1/4 in. (54 x 54 cm)

Edition of 125

Signed | Numbered